

**EZ ENTRY**®

5299 ENTERPRISE DRIVE  
LOCKPORT, NY 14094  
PH. (716) 434-3440  
FAX. (716) 434-7770

PROJECT:

LOCATION:

ARCHITECT:

DWG NO. 009

REV 11/01/07

STYLE: EZ III SQUARED

UL LABEL

6" FRAME DEPTH

DELAY ACTION  
HYDRAULIC CLOSER

WINDOW  
(OPTIONAL)

ANCHORS

- STUD
- MASONRY
- TUBE

HANDICAPPED  
LEVER

SILL: TACK PLATE  
DIAMOND DECK  
(OPTIONAL)

7' 0" OVERALL  
FRAME

6' 8" DOOR

80" CLEAR  
OPENING

36" DOOR

44" OVERALL  
FRAME

3/8" CLEARANCE

GAL INTERLOCK  
(PRE PIPED)

DUAL HANDLE

MASONRY  
ANCHOR  
STRAPS (4)

6"

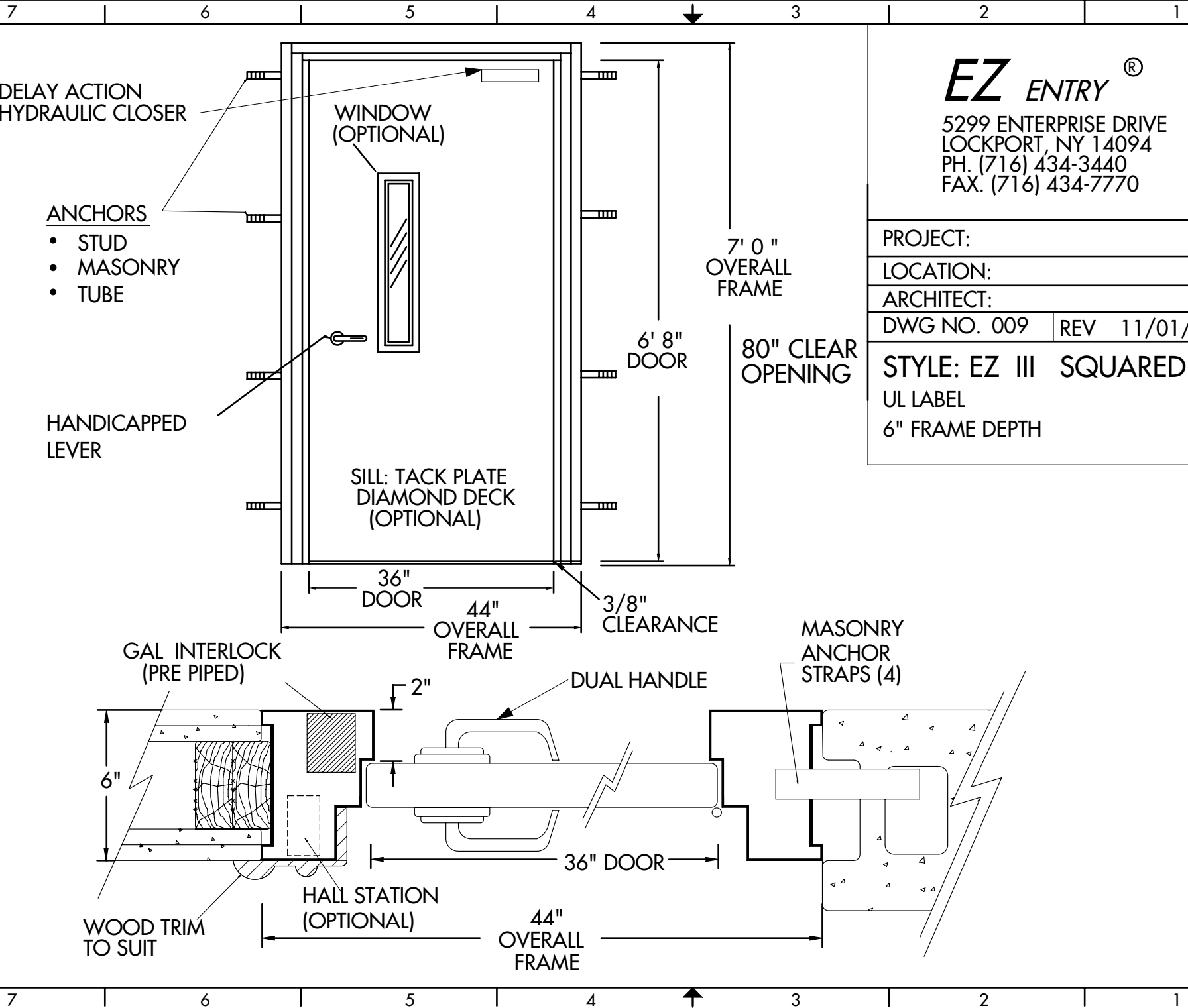
2"

36" DOOR

WOOD TRIM  
TO SUIT

HALL STATION  
(OPTIONAL)

44" OVERALL  
FRAME



USER REVD/DATE FNAME