

EZ ENTRY®

5299 ENTERPRISE DRIVE
LOCKPORT, NY 14094
PH. (716) 434-3440
FAX. (716) 434-7770

PROJECT:

LOCATION:

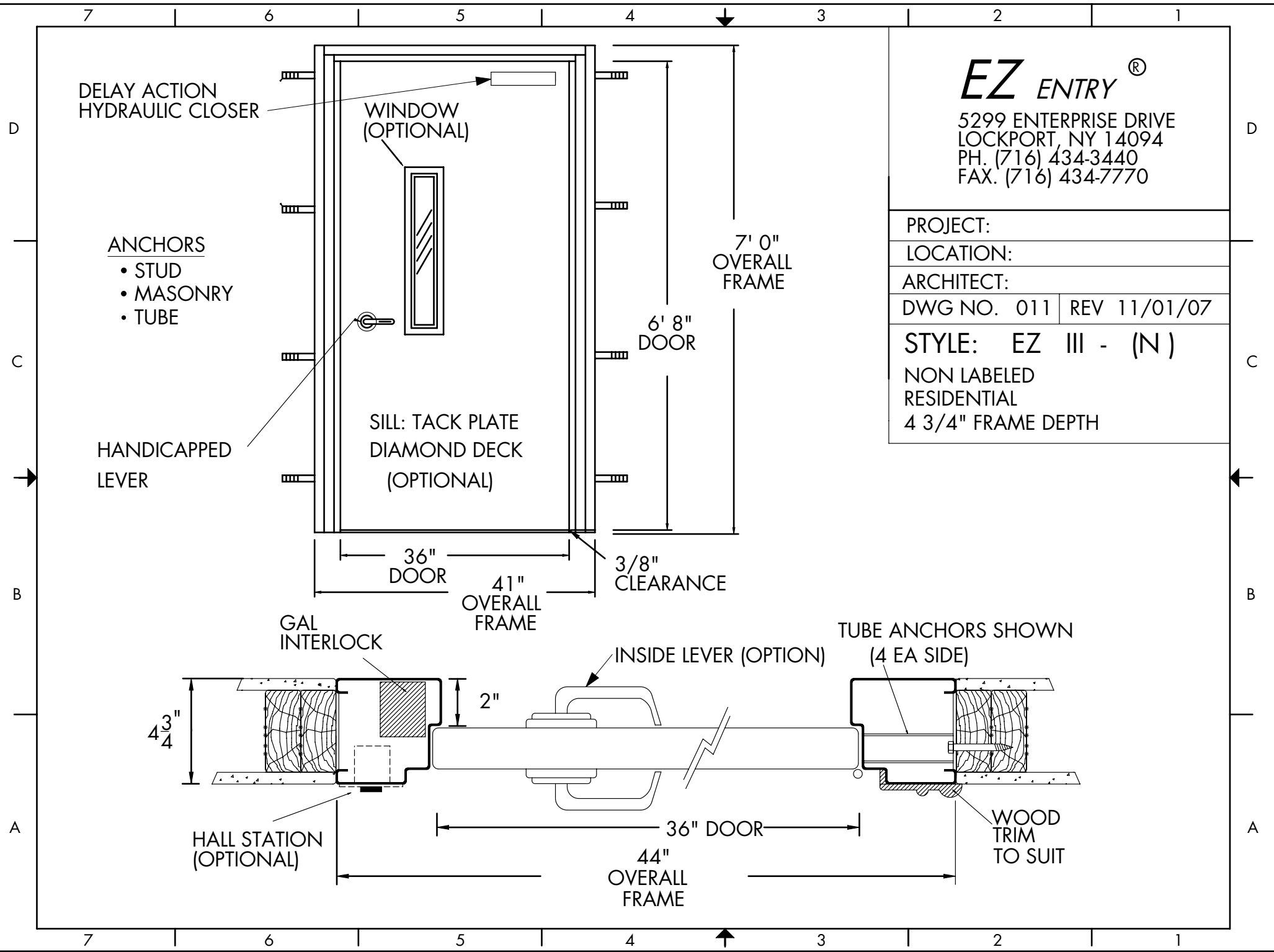
ARCHITECT:

DWG NO. 011 | REV 11/01/07

STYLE: EZ III - (N)

NON LABELED
RESIDENTIAL

4 3/4" FRAME DEPTH



DELAY ACTION
HYDRAULIC CLOSER

WINDOW
(OPTIONAL)

ANCHORS

- STUD
- MASONRY
- TUBE

HANDICAPPED
LEVER

SILL: TACK PLATE
DIAMOND DECK
(OPTIONAL)

7' 0"
OVERALL FRAME

6' 8"
DOOR

36"
DOOR

41"
OVERALL FRAME

3/8"
CLEARANCE

GAL
INTERLOCK

INSIDE LEVER (OPTION)

TUBE ANCHORS SHOWN
(4 EA SIDE)

4 3/4"

2"

HALL STATION
(OPTIONAL)

36" DOOR

WOOD
TRIM
TO SUIT

44"
OVERALL FRAME

USER REVD/DATE FNAME